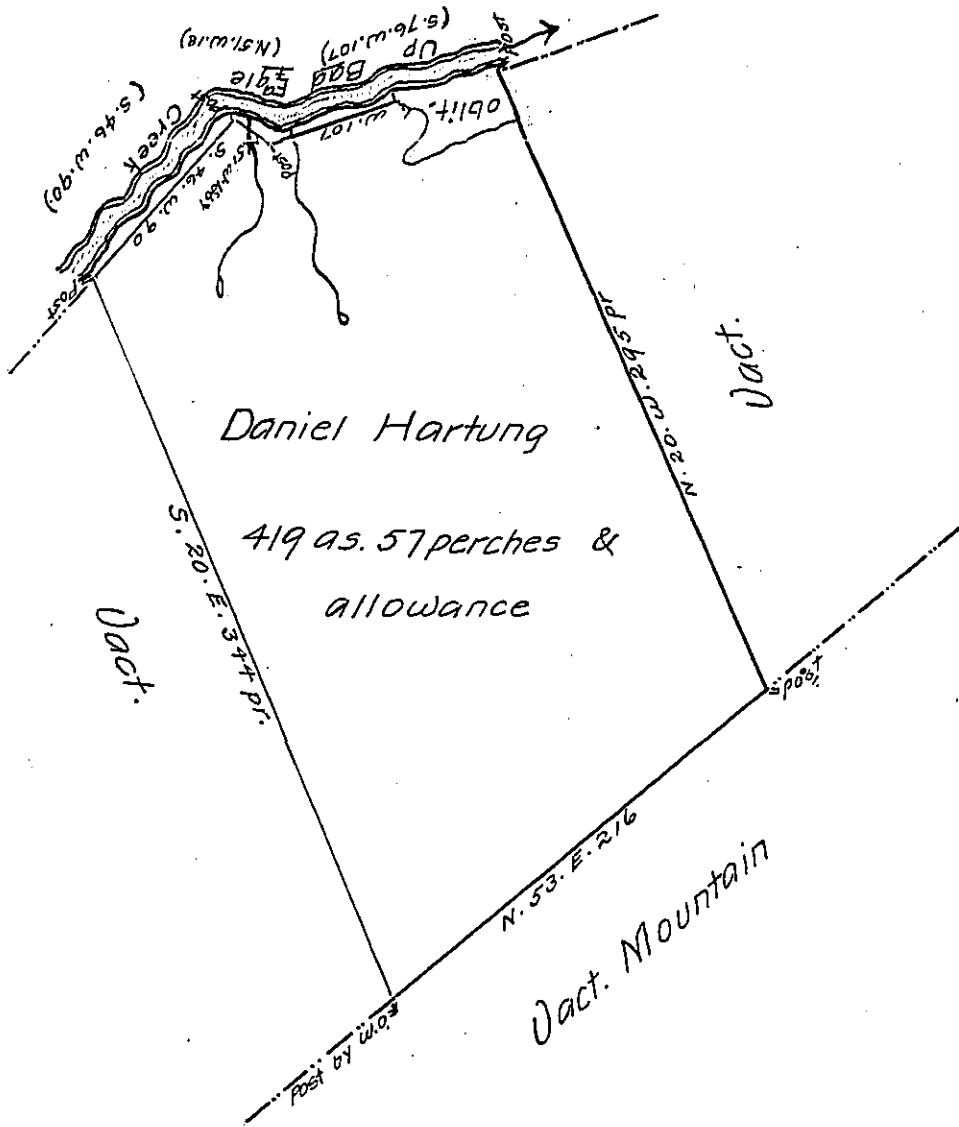


No. 2



Situate in Mifflin County Upper Bald Eagle Township on the South Side of Bald Eagle Creek Containing Four Hundred ⁸/_x nineteen acres fifty Seven perches and the usual allowance for Roads Surveyed the first Day of December 1793 In pursuance of a Warrant dated the 6th September 1792.

Jo. J. Wallis D.S.

Daniel Broadhead Esqr. S.G.

IN TESTIMONY that the above is a copy of the original remaining on file in the Department of Internal Affairs of Pennsylvania, made conformably to an Act of Assembly approved the 16th day of February, 1833, I have hereunto set my Hand and caused the Seal of said Department to be affixed at Harrisburg, this third day of May 1905

George D. Perry
 Secretary of Internal Affairs.